



...we really care and make learning fun.

# Stottesdon C. of E. Primary School



Shropshire Gateway Educational Trust

Tel: 01746 718617

Email: [admin@stottesdon-school.co.uk](mailto:admin@stottesdon-school.co.uk)

7th January 2022.

Website: <http://stottesdon-school.co.uk/home>

## Diary Dates

Monday 10th January	Private Music Lessons POSTPONED UNTIL WEDNESDAY
Tuesday 11th January	Esther Leverett Williams – Private Music Lessons
Wednesday 12th January	Esther Leverett Williams – Private Music Lessons
	Rugby After School Club
	Craft After School Club
Thursday 13th January	Choir After School Club
	FoSPS AGM via Zoom at 8pm
Friday 14th January	Board Games After School Club

**New Year's Resolution Idea: enjoy books regularly with your children to help their vocabulary and reading skills.**



### Covid Update

Staffing, as highlighted nationally, is a challenge. This week the school has had 4 staff absences, due to Covid, which is 1/3 of teaching staff. Provision has been maintained credit to staff determination and flexibility and this will continue to be the priority. Cases amongst children are currently low. **We will return to normal running next week (not bubbles) but ask that parents use LFD's to screen for the virus before attendance on Monday.** We know there are shortages in LFD supplies and will support where we can, but if we can keep transmission out of school we have a better chance of maintaining face to face provision.

#### KEY THINGS TO REMEMBER:

- Please use LFDs to screen for the virus before attendance on Monday
- If you have a positive LFD result you should isolate for 10 days. Isolation, if you are vaccinated, can end earlier if you have 2 negative LFD tests (24 hours apart) from day 6 of your isolation.
- All children have been given a 'home learning' book to be kept at home. This can then be used for work in the event of having to isolate (but well enough to keep up with school work) or the school having to set up home learning for a class if all other alternatives have been exhausted. Children all have log ins for Office/Teams/ Purple Mash, as appropriate, in their reading records.

### After School Clubs

**Clubs are still scheduled to start next Wednesday—please see attached schedule.** If you would like your child to take part in any of the clubs available, please sign them up using the online payment system. The craft club is already full.



## Daily Reflection or Prayer

• Our New Year has started with reflecting on New Year's Resolutions and looking back and forward like the Roman God, Janus, who January is named after. Children have thought about choices and how we are in control of our choices. They have thought about the choices they would like to make more this year: kindness, helpfulness, perseverance, balanced diet, exercise, time with family and friends, looking after ourselves, new hobbies or sports, being more environmentally friendly.....

• Phase assemblies reflected on Epiphany: when the Wise Men or Three Kings brought presents to Jesus and the realisation (epiphany) that Jesus was the God incarnate/God's son.

Janus  
January



## THE SYMBOLIC GIFTS



**GOLD**  
The royal metal; signifies Jesus' Kingship (hence, the gift for a king).



**FRANKINCENSE**  
Symbol of prayer; signifies Jesus as the High Priest/Mediator between God and man (hence, the gift for a priest).



**MYRRH**  
A burial ointment; meaning that Jesus had to die for the salvation of all (hence, gift for one who would die).



## Nancy

Very sadly, Nancy lost her battle with cancer just before Christmas. Our thoughts are with her family at this extremely sad time.



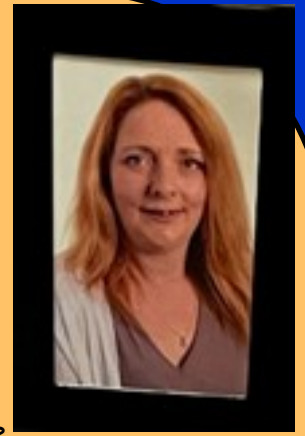
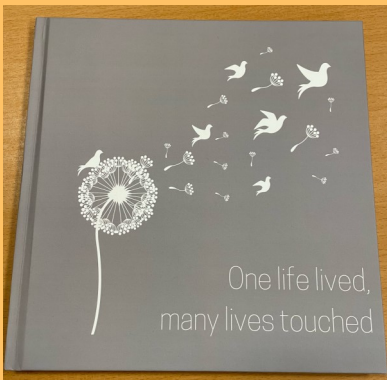
It has been important to talk openly and honestly about this with children.

Each class has reflected on memories in an assembly this week. We have a reflection space which is visiting each class and children will have opportunity to tie a ribbon on the tree as they give thanks and remember Nancy or any other people or pets that were special to them and have died.

Children will also have opportunity to write in the condolence book any messages or memories. Both these items will then be taken to the funeral.

If any parents would like to send any memories or messages for the condolence book, by email, we will make sure these are included.

As a permanent remembrance, we have purchased a Lilac Bush called 'Belle De Nancy' which is fragrant and attracts butterflies. This will be planted in our Early Years Area to help us remember our beautiful friend, mum and colleague.



The funeral is due to take place on Thursday 20th January 2022 and many staff, who are also friends and members of the community will want to attend.

In order to facilitate this, the Nursery will be closed on Thursday 20th January. We apologise for any inconvenience caused but this is an exceptional circumstance which friends and colleagues would like to support the family with.

The wrap around and school will be sustained but there will be a variety of flexible staffing arrangements.



Dear God,

We remember and give thanks for Nancy...a member of staff, a mum and a friend.

We remember and give thanks for all she brought to enrich our school; her creativity, fun, joy, caring, stories and love.

We hold her and her family in our hearts and share our love and sympathy.

Help us cherish the days gone by and inspire us with love, courage, faith and hope for the present and future,

Amen



## School Closure Arrangements

As we head deeper into the winter period we would like to remind parents of the procedure if we need to close the school (due to severe weather). This will always be as a last resort to ensure the safety of staff and students.

- Decisions will be made and communicated by 7am at the latest.
- Decisions to close will be sent by email and will be announced on Shropshire Radio (**Frequency:** 96 MHz, 90 MHz, 95 MHz, 104.1 MHz)

## FoSPS

One way in which you could support FoSPS would be to join our School Lottery, please follow the link below to do so.

It's really easy to join, you can set up a direct debit for payment, it's only £1 per ticket and every Saturday there is a draw where you could win the national prize fund of £25,000

Our school lottery currently raises just over £1,800 a year, which goes directly to the school.

We have 43 supporters, who have all purchased a weekly ticket; if every parent signed up, we could double this amount each year, which would be an amazing contribution to help support our school.

[www.yourschoollottery.co.uk](http://www.yourschoollottery.co.uk)

**Next FoSPS meeting to take place on Thursday 13th January at 8.00pm (via Zoom)**

## EYFS News

Nursery Talk for Writing: Whatever Next  
Reception Talk for Writing: Supertato



We are inviting all Reception parents to our first Play and Stay session. This session will focus on supporting your child with their phonics and writing. It will be a fun session with games and information. I'm sure your child would love to show you their class work in their learning journals too.

**Our Rhyme of the Week:** 999, 999, Emergency Emergency

This half term we will be learning about 'People who help us'. Please see our curriculum map attached.

## Curriculum Maps

Attached to the school news are the curriculum maps (what children will be learning) for this term. Talking about children's learning is really helpful and this may help parents to be aware of themes, work and expectations in school. Further information can be found here:

<http://stottesdon-school.co.uk/learning/curriculum>

## Rea Class



Here are some words that Rea Class will be using in their lessons next week. You might find it useful to share some of these words with your children and talk about their meaning.

### Science Words

locomotive - can move from one place to another.

vertebrate - an animal that has a backbone.

invertebrate - an animal that does not have a backbone.

### History words

modern - in present or recent times.

plastic - a useful man-made material that many modern toys are made from.

battery - provides electrical power and is usually portable.

interactive - Something that responds back to the user.

### English words

hearty - fills you up, filling.

merchant - a person who buys or sells things.

workshop - a room in which things are made or repaired.

jig - a lively dance

### Computing

digital display board - using electronic technology to display information.

search - to look for something

Filter your search—you narrow what your looking for by choosing more exact things

Phonics for year one will be comparing alternative ways of making the oa sound.

Phonics and spelling for year two will be homophones and words with silent letters at the start

## Job Vacancies at our school and across the Shropshire Gateway Educational Trust



Our school currently has the following vacancy:  
**Nursery and wrap around teaching assistant at Stottesdon Gateway Nursery—Monday and Tuesdays all year round**  
(Advert and job description attached)

Due to development of specialist areas within the MAT central team, our trust has the following vacancies.  
Please share widely (attached sheet for further details):

- Assistant to the Trust Business Manager
- Office and Administration Manager for Lacon Childe School
- Trust Clerk to the Directors and Governing Boards of all 4 schools
- Cover Supervisor for Lacon Childe School

## School Council—Desk Top Calendar Fundraiser

**SALE / SALE / SALE**

Desk Top Calendar now available at a reduced rate of £3.

The art work really is lovely and funds get split between Cancer Research and School



## Class Reading Information:

Time: 86% Rea: 52% Corve: 65% Severn: 91%

PLEASE HELP OUR YOUNGEST CHILDREN AND READ WITH THEM 4 TIMES A WEEK TO HELP DEVELOPMENT WITH THIS CRUCIAL LIFE SKILL.

### Achievers

#### Well done this week to:

James for his listening and focus skills this week.

Theo W for his super subitising skills and helpful description of arrangements in our maths game this week.

Bella C for her sentence using the word of the week —'The monkey shuffled to the shop to buy a banana'.

Teddy for coming back with a focused attitude.

Handwriting star of the week is Ruby.

Jay for his amazing manners.

JJ for his resilience when writing poetry.

Willow for the amazing effort she has put into all her lessons this week.

Caleb for reading confidently out loud in class.

Jack for his focus in history when completing his WW2 timeline.

Bronze Spelling Bee: **Florence, Sofia, Lottie D, Lilly, Ruby Wilson, Noah Weston and Zach**

Silver Spelling Bee: **Billy and Felicity**

Book Token: **Phoebe S, Ruby B, Bella C, Spencer, Bea, Sofia, Tabitha, Florence, Scarlett, Jasmin, Noah PD and Freddie**

