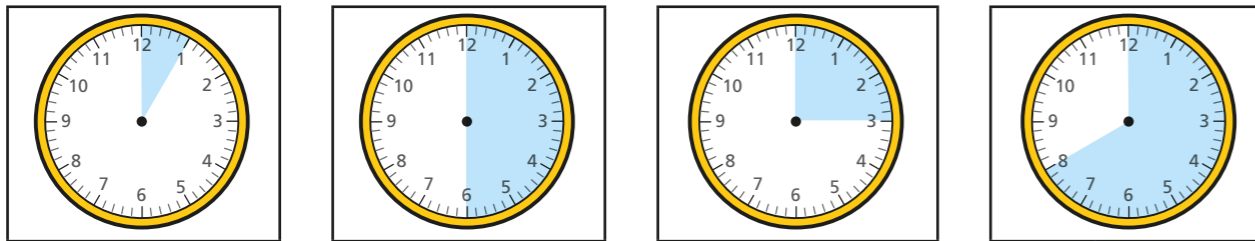


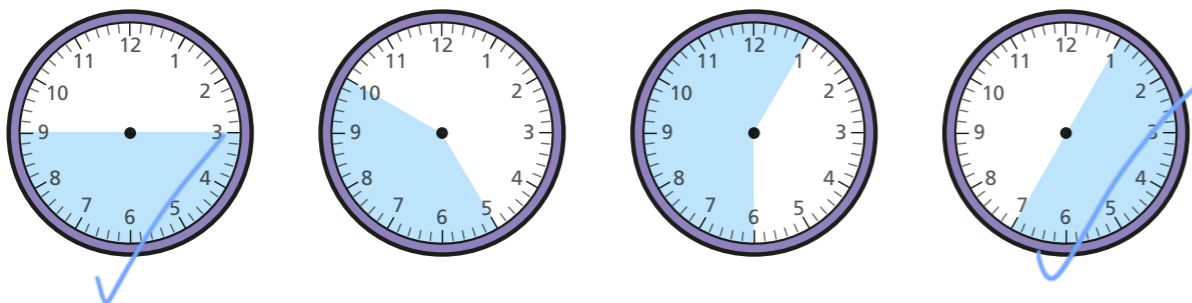
Find durations of time

1 Match the durations on the clocks to the labels.



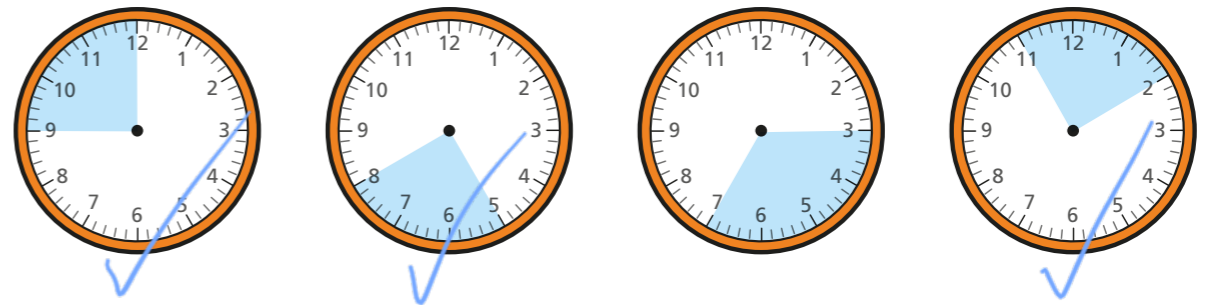
15 minutes 40 minutes 5 minutes half an hour

2 Tick all the clocks that show a 30-minute duration.

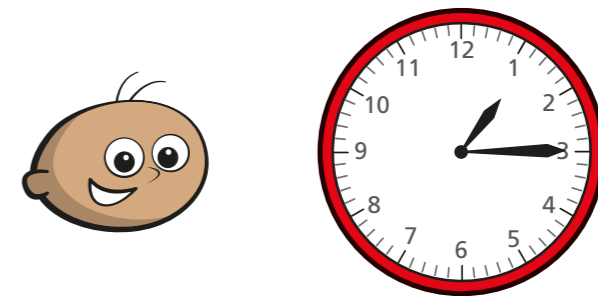


Talk to a partner about what you notice.

3 Tick all the clocks that show a 15-minute duration.

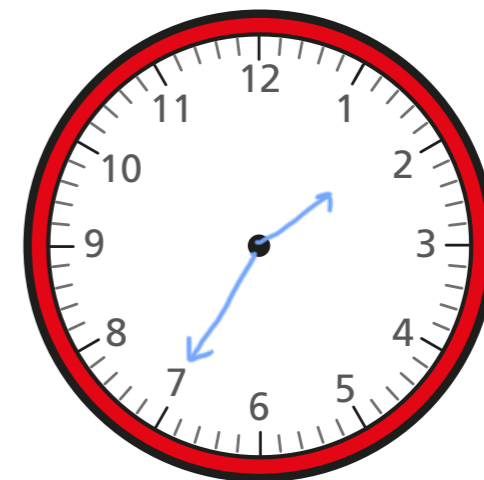


4 Tommy sat down to play a game at quarter past 1

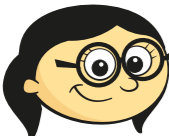


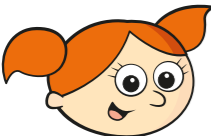
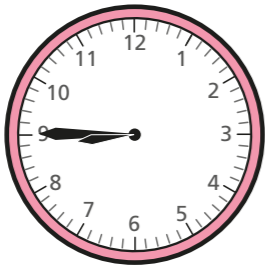


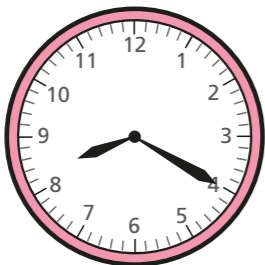
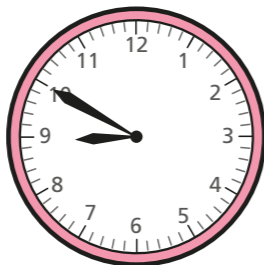



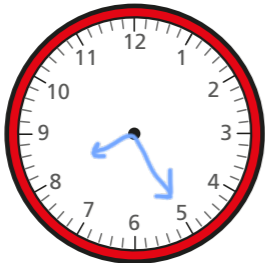
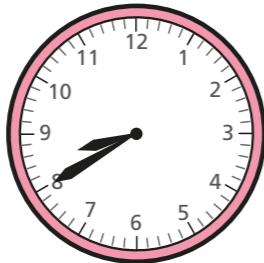


The game took 20 minutes.

Draw the hands on the clock to show what time the game finished.



- 5 The table shows information about some children's journeys to school.

Name of child	Left home	Arrived at school	Journey time
 Annie			30 minutes
 Alex			10 minutes
 Jack			30 minutes
 Mo			20 minutes
 Dexter			15 minutes



- a) Complete the table.
b) Is each statement true or false?

Circle your answers.

Annie arrived at school first.

true **false**

Jack left home first.

true false

Mo and Dexter left home at the same time.

true false

Annie left home before Jack.

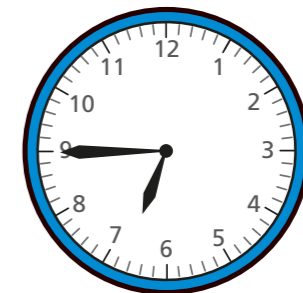
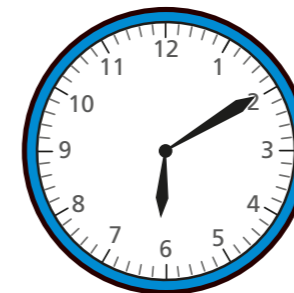
true **false**

Alex arrived at school after Jack.

true false

Make up your own true or false question about the table to test your partner.

- 6 Whitney watched TV from 10 past 6 until quarter to 7



How long did she spend watching TV?

35 minutes

