



The Stotty School News 1.05.2026



1 -

Part of The Four Stones Gateway Trust

Tel: 01746 718617

Email: admin@stottesdon-school.co.uk

If viewing on a phone and you can't see all the text just swipe up on the writing.

Diary dates for the week ahead



Diary Dates for next week	
Monday 4 th May	BANK HOLIDAY - School Closed
Tuesday 5 th May	Private Music Lessons with Mrs Leverett Williams Lunchtime Gardening Club Lacon sports coach with Corve & Severn Class Summer Sports After School Club - 3.15pm to 4.15pm
Wednesday 6 th May	Private Music Lessons with Mrs Leverett Williams Rounders After School Club
Thursday 7 th May	Craft After School Club SATs Club - 3.15pm to 4.15pm
Friday 8 th May	Severn Class attending Rounders Festival at Lacon Childe School - children will need PE kit / water bottle and waterproof coat - within the school day
Upcoming Diary Dates	
W/C 11 th May	Year 6 SATs
Friday 15 th May	FoSPS Ascension Day Sponsored Walk
Monday 18 th May	London Residential Parent Meeting @ 3.30pm
Thursday 21 st May	Severn Class Trip to Craven Arms Mosque
Friday 22 nd May	Last day of Summer 1 term
Monday 25 th - Friday 29 th May	Half Term
1 st June	First Day of Summer 2 Term
9 th - 12 th June	London Residential

A warm but firm approach

We want all our students to succeed and care about all of them. We adopt a warm but strict approach. If we need to be firm it is because we care and we want students to do well. **Peps McCre** is a well-known UK education expert who works to improve the quality of teaching in schools, so that pupils learn more effectively and benefit from consistently strong classroom practice. [\[pepsmccrea.com\]](http://pepsmccrea.com). In his weekly update he writes:



Over the last few decades, several sections of society have drifted towards [gentler forms of parenting](#). Giving kids increasing levels of choice in what they do or eat, while eschewing authority and consequences.

While this sounds like a kind approach, evidence suggests it's actually the opposite. *Permissive parenting* is linked with more acting out, lower grades, and poorer wellbeing. Giving kids too much freedom when they're young robs them of freedom as they grow.

Authoritative parenting may not sound as nice, but it tends to foster much happier and better-adjusted children. Virtually every parent-enforced rule (apart from limiting their friends) is [positively linked to better relationships](#). **Clear structure is the foundation of self-regulated and resilient kids.**

In many ways, **structure creates safety, particularly in school. When children know how to act and what to expect, children can focus on learning, not navigating uncertainty. This is especially important for our most vulnerable students.** Examples of what this looks like include:

- **Clear norms and routines for participation: who does what, when, and how we all respond.**
- **A shared narrative of mutual respect: how we value all genuine contributions.**

Gentle schooling, like gentle parenting, might make us feel better about ourselves AND it's the easier option (at least to begin with). However, these are shallow and temporary victories.

If we really want to give our students the best possible start in life, it's essential that we embrace *authoritative schooling*. **This doesn't mean being punitive...** it just means **balancing high levels of (genuine) care with high levels of structure**, and not shying away from being the 'adults in charge'.

Sponsored Walk





It has come to that time of the year again when we do a whole school sponsored Ascension Day walk in the local area. The walk (around 4.5 miles for the older children - the younger children will do a shorter route) will take place on Friday 15th May 2026.

We make lots of links with the activity: appreciating our local environment and landscape; mental health and well being - getting out and about with our friends; always doing the activity around Ascension day (Jesus' ascension into heaven). We also use the event to raise money for good causes, this year we will split the money 50/50 between FoSPS and the charities below who support people to have safe shelter in times of crisis (please note that this is something that the children voted to do as their next initiative to help others):

- *Shelter Box - An organisation who provide shelter, essential items and technical assistance to help some of the world's most vulnerable people recover and rebuild their homes after disaster. They listen and adapt their support to the needs of each community, working together with those affected by disaster, alongside their supporters and partners.*
 - *Crisis - Who work directly with people experiencing or at risk of homelessness in 9 areas across England, Scotland and Wales. They provide practical one-to-one support to help people access benefits, healthcare services, employment opportunities, and more. Their main aim is to relieve the huge pressure of homelessness, by helping people find safe and affordable homes as quickly as possible*
 - *and our **FoSPS** who do so much to help with projects, transport and books.*
-

Sponsorship forms will be sent home with the children (sponsorship is a flat amount for the walk) and we would be grateful for your support in this fundraising.

The walk will happen within school hours. Children will have a 'packed lunch' at Ginny Hole, Shropshire Adventures have kindly agreed to let us use their facilities, before returning to the school.

Below is what the children will need:

1. A packed lunch (not too heavy!) which they will carry with them.

2. A water bottle.

3. A ruck sack for their brunch, water bottle and possibly a coat (please make sure it has comfortable straps as we have had problems in the past with string straps beginning to make shoulders sore).

*4 Appropriate clothing (non school uniform - **full length trousers to avoid ticks and nettles**) and footwear (**good trainers or walking shoes**) for the walk. Dependent on the weather (we will send further advice the night before) they may need:*

-
- a sun hat and have had sun cream applied*
 - a light weight coat or waterproof that can be fitted into their bag.*
-

Staffing update

Sadly for us, Mrs Leverett Williams has decided to start a new phase in her life and will be leaving her teaching post (she will continue her private music lessons until further notice) at the end of this academic year. As a result, the school is beginning recruitment processes which we will make everyone aware of once they are live.

We will of course be making the most of the rest of our time with Mrs Leverett Williams and organise appropriate celebrations at the end of term.

Please watch out for further information in the school news.

Royal Visit



Everyone had a wonderful time at Willowdene on Thursday. It was so nice for the school to be included in this special community occasion. Children, whilst waiting to see HRH The Duchess of Edinburgh, were fortunate to:

- *Talk to members of the protective security team*
 - *Meet the new High Sheriff of Shropshire - Katy Tanner*
 - *Share the fantastic book 'The Queen's Hat'*
 - *Identify key landmarks from the book on a map of London*
 - *Play a game of Royal 'guess who'*
 - *Have afternoon tea of cakes and drinks (Thank you Willowdene for providing this)*
 - *Have a sing-song*
 - *Visit the alpacas; 'Sally' the sow; seven week old piglets; see Angus and British Blue cattle; Mrs Jones's favourite 'Barney' the Greyface Dartmoor ram, and the Greyface Dartmoor ewes and lambs*
 - *..... and of course wave flags and welcome HRH, who made time to come and talk to the children after the unveiling of the plaque.*
-

Please see photographs on the attached PDF document.

Swimming



We are pleased to inform you that **swimming lessons will commence in June 2026 at The Severn Centre, Highley.**

Swimming is a vital life skill, and although schools are **only required to provide swimming lessons to Key Stage 2 pupils**, we fully recognise the importance of water confidence and safety. For this reason, **we aim to offer swimming lessons to most year groups each year, where possible.**

Cost and Funding

Unbelievably, in the current financial climate, the cost to parents works out at **£20 for a block of six swimming lessons per child**. This amount has been **significantly subsidised through the PE and Sports Premium**.

Please note, however, that **the school is unable to subsidise the cost further**. These lessons are therefore dependent on **sufficient voluntary contributions** being received. Unfortunately, **if we do not receive enough contributions, we may have to narrow the offer or cancel the sessions.**

Contributions need to be made by the end of this half term to enable us to make an informed decision.

Key Information

-
- **Start date:** June 2026
 - **Venue:** Severn Centre, Highley
 - **Cost:** £20 for 6 lessons
 - **Pupils involved:** Reception / Years 1,2,3,4 plus older children who are unable to swim a length
-

Nursery Places Available



Stottesdon C of E Primary School and Nursery



NURSERY SPACES

Available for September 2026

What We Offer:

- A safe and nurturing atmosphere supported by dedicated and caring staff.
- High-quality provision with robust connections to facilitate a smooth transition to Reception.
- An incredible outdoor space, access to school facilities, and an off-site Forest area.
- Early Years Teacher led Nursery
- Play-based learning
- 15 & 30 funded hours available
- Holiday Club & Wraparound available

...we really care
and make learning fun.

admin@stottesdon-school.co.uk www.stottesdon-school.co.uk

Our Worship / Reflections this week:

Monday: We heard stories from other faiths about showing compassion and kindness to animals.



Tuesday: Dr Matthew and Sarah Home came to explain about their Royal visit to celebrate how they show compassion to people going through a tough time in their lives.



Wednesday: Children reflected on a story called 'Each Kindness', where a person in a class wasn't made to feel welcome or included. Over time the children began to regret that they didn't chose to do the simplest of things to be friendly eg: offering a smile, sitting next to someone, letting someone join a game

No Outsiders

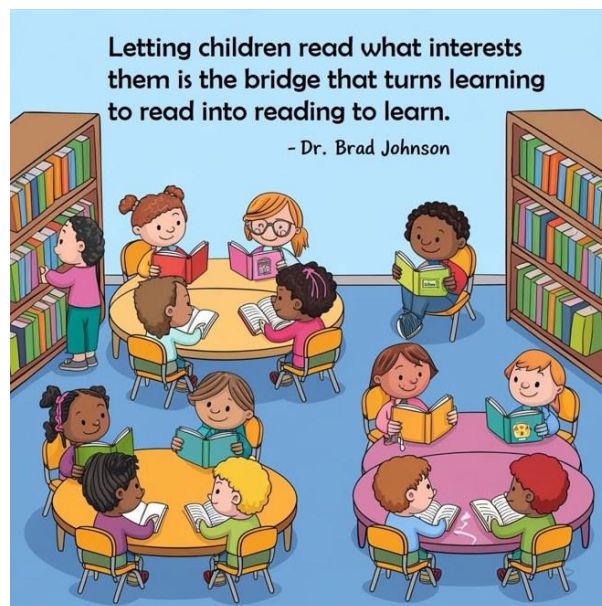


**Everyone different,
everyone welcome.**

Thursday: Reverend Sally told the children the Bible story; "Loaves and fishes" which refers to the biblical miracle where Jesus fed a crowd of 5,000+ people with only five loaves of bread and two fish. We reflected on compassion by sharing what we have.



Celebrating Reading



Reading

Reading with children is one of the most powerful gift parents can give. The development of language, creativity and cultural understanding from reading, discussing and sharing is HUGE so if you are giving this gift thank you for helping to keep this powerful, essential activity 'alive'. Reading is also very powerful as it reduces stress (for the child and the adult!).

Teme: 100%

Rea: Yr1=92% / Yr2=100%

Corve: 84%

Severn: 97%

Screen Time

Please read the following article regarding screen time for under fives, which was on the news recently.

Screen time for under-fives should be limited to one hour a day, parents told

Read in BBC News: <https://apple.news/AjklAOnnCQ6yBHI1v5jlchQ>

Nursery & Reception News

Summer 1: Minibeasts

This week in EYFS, we have been closely observing the exciting changes taking place in our five caterpillars.

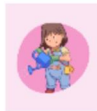
The children have been learning all about the life cycle of a butterfly and have enjoyed watching the caterpillars grow day by day. We are now patiently waiting for them to form their cocoons and can't wait to see what happens next!

This week in Bikeability, we recapped the skills learned in sessions 1 and 2, including helmet safety, safely picking up our bikes, and lifting our legs as we push and glide. We then moved on to learning about the importance of using our brakes safely and effectively.

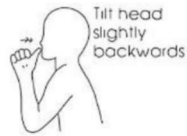
NURSERY

Nursery Rhyme of the Week:

Mary, Mary, Quite Contrary



Makaton Sign of the Week:



WATER

Phonics Sound of the Week:



Pronunciation Phrase - j

Pucker your lips and show your teeth use your tongue as you say j j j

RECEPTION

Talk for Writing Text:



Mastering Number: This week, the children consolidated their understanding of the composition of 5 and practised recalling the parts of 5 when one part was hidden. A key representation used was the fingers on one hand, with children focusing on both the fingers that were 'up' and those folded down. This was linked to a rhyme about five kittens jumping 'down' from the bed. The children were also encouraged to subitise when an arrangement showed 5 and when it did not.

In addition, the children built on their previous learning about the composition of 6 and 7 as '5 and a bit' and explored how 8 and 9 can also be composed in the same way. A range of representations was used, including fingers, double dice frames and ten frames, where 5 was clearly visible as a part. Through discussing and comparing these representations, the children were able to generalise that numbers 6 to 9 can all be made with 5 as one of the parts.

Phonics: This week the children have read words with two or more digraphs.

	ai		ee		ur		ow	sharp	shark	sheep	cheep
	igh		oa		oi		ear	queen	tooth	short	thinker
	oo		oo		air		er	powder	church	corner	farmer
	ar		or					torch	chain	shower	march



Parenting Signposts



The Best Start in Life campaign, aims to increase awareness of the importance of early years in a child's development and the role of early years education.

Please visit their website (formerly Childcare Choices): <https://www.beststartinlife.gov.uk/>


The website contains a wealth of information from pregnancy through to starting school.



Please find link below to the excellent guide that has been produced to support parents in their decision making and oversight of what children are doing online:

<https://www.childrenscommissioner.gov.uk/resource/what-i-wish-my-parents-or-carers-knew-a-guide-for-parents-and-carers-on-managing-childrens-digital-lives/>

Understanding Your Child with SEND - Summer 2026



Understanding Your Child with SEND

From Toddler to Teen

"I met others going through the same things. It really helped me feel less alone."
"The group boosted my confidence as a parent."

Join our friendly, relaxed group!

Join our friendly, free group for parents and carers of children with SEND. Connect with others, deepen your understanding of your child, and explore what's going well and what you'd like to change. Small changes make big differences!

Upcoming Sessions (once a week over 10 weeks, excl. half terms and bank holidays)

- 13th April 2026 - 10.00am-12.00pm - Online via MS Teams
- 16th April 2026 - 1.00pm-3.00pm - St Lucia's School, Upton Magna (SY4 4TZ)
- 17th April 2026 - 9.30am-11.30am - Whittington Primary School, (SY11 4DA)

SEND groups are for parents/carers of children who may have special educational needs or disabilities. No formal diagnosis is needed.

What We'll Talk About



- Communication and building confidence in your relationship with your child
- Exploring routines such as sleep and bedtime
- Understanding behaviour and emotional regulation
- Child development and ways you can support it

Want to Join Us?


Email: parenting.team@shropshire.gov.uk
Call: 01743 250950
Visit: [The Parenting Team | Shropshire Council](#)

Prefer flexible online learning?

Try our free online learning pathways at [Becoming Togetherness - Togetherness](#)

Understanding Your Child Groups - Summer 2026



Understanding Your Child

From Toddler to Teen

"I met others going through the same things. It really helped me feel less alone."
"The group boosted my confidence as a parent."

Join our friendly, relaxed group!

Parenting can be full of ups, downs, big feelings and lots of learning — for both you and your child! Come and join us as we chat about what's going on for you and your family. Together we'll make sense of tricky moments and share simple ideas that can make life calmer and more positive.

Upcoming Sessions (once a week over 10 weeks, excl. half terms and bank holidays)

- 13th April 2026 - 12.45-2.45pm - Belvidere Primary School, Shrewsbury (SY2 5YB)
- 13th April 2026 - 1.00-3.00pm - Ludlow Primary School (SY8 1HG)
- 15th April 2026 - 9.30-11.30am - Pontesbury Primary School (SY5 0TF)
- 15th April 2026 - 1.00-3.00pm - Wilfred Owen School, Shrewsbury (SY2 5SH)
- 15th April 2026 - 5.00-7.00pm - Online via MS Teams

What We'll Talk About



- Communicating and building connection with your child
- Routines like sleep and bedtime and any other routines you have as a family
- Understanding behaviour and big emotions
- Child development and how you can support it

Want to Join Us?

Email: parenting.team@shropshire.gov.uk
Call: 01743 250950
Visit: [The Parenting Team | Shropshire Council](#)

Prefer flexible online learning?

Try our free online learning pathways at [Becoming Togetherness - Togetherness](#)

Sleep Tight Work Shops - Summer 2026

Does your child struggle with their sleep?

Free Sleep Tight Groups

Join us on one of our virtual or face-to-face groups and:

- Find out why sleep is important for our health and emotional wellbeing
- Get support to help improve sleep and bedtime routines
- Meet other parents/carers to share and discuss experiences

Sleep Tight Universal Group 24th April 2026 from 10.00am to 12.00pm
Virtually Via MS Teams

Sleep Tight SEND Group 12th June 2026 from 10.00am to 12.00pm
at The Keystone Academy, Squinter Pip Way, Shrewsbury, SY3 8XQ

The groups run for 5 weeks excluding the school holidays and bank holidays.

Groups with SEND are suitable for parents/carers of Children who might have special educational needs and disabilities, no formal diagnosis is needed to attend the groups.

To book a place email Parenting.team@shropshire.gov.uk or call 01743 250950



'Kids' Shropshire Universal Autism Support Service

Kids Shropshire Universal Autism Support Service

Kids offer warm, supportive services for parent carers and families of children and young people with additional needs and disabilities across Shropshire. We help provide families with practical tools, emotional support and confidence to help families thrive.

"Kids are here to support families every step of the way."

Families can access a bespoke package of support including:

- Riding the Rapids programme
- Coffee mornings and drop-in sessions
- Neurodivergency workshops
- Autism, ADHD and Demand Avoidance Workshops
- EBSA workshops
- Sleep support
- Behaviour workshops
- One-to-one support

Child and young person:

- Understanding Me - group sessions
- LEGO® therapy sessions
- Managing emotions and feelings
- therapeutic activities/sessions

Kids Disabled children say we can

Registered office: 249 Birmingham Road, Wyldes Green, Sutton Coldfield B72 1EA
Company limited by guarantee no: 1346262
Registered charity number: 275935

Tel: 01743 644506
Email: kids.shropshire@kids.org.uk

This is a commissioned **free support service** providing information, advice and guidance to parent carers, families, and children/young people up to the age of 19.

The support is offered by friendly staff with lived experience across several platforms to ensure maximum accessibility – online peer support groups and training sessions, drop in coffee and chats in our communities, in person family events and on line resources.

The support is available to all Shropshire families, no diagnosis is necessary and we warmly encourage parent carers and families to talk to Kids and access their support offer as early as possible, they provide a wide range of support covering sleep, sensory issues, emotional based school avoidance, Lego therapy & parent workshops. Professionals support workshops are also available to staff.

Please see link [Shropshire Universal Autism Support Service - Kids](#)

Parenting Help & Support Line



Shropshire Public Health Nursing Team



Follow Us on Facebook

For Our Latest Public Health Information & Updates

 @ShropshirePublicHealthNursingService



SHROPSHIRE 0-19 PUBLIC HEALTH NURSING SERVICE

Shropshire Family Information Service

 Hello from the **Family Information Service** (FIS for short). Our job is to give you the info and resources you need to help your family life run a little smoother. We can help with:

- Childcare - finding it and advice on paying for it
- Local baby and toddler groups
- Events, clubs, activities, and fun things to do in the school holidays, for all ages
- Getting parenting and family support
- Finding health and wellbeing support

We cover everything and anything to do with family life, so if you have a question, chances are we'll be able to help, or if we can't, we'll point you in the direction of someone who can.

Follow us on social media for all the latest news and info.

 @ShropshireFamilyInfo
 @ShropshireFamilyInfo
 @ShropFamilyInfo

www.shropshire.gov.uk/fis

What is Shropshire Family Information Service:

The Shropshire Family Information Service (FIS) is a brilliant universal service. The FIS brings together loads of useful, local information for families, to help take the stress out of things like finding:

- Childcare or baby and toddler groups
- Holiday clubs, events and things to do as a family
- Parenting, relationships, and emotional health and wellbeing support
- Cost of Living info and advice

FIS use our social media channels to bring families news, events and handy information, which links through to our [Family Information Directory](#). Families are welcome to contact us directly for help with anything to do with family life. We have created a brand new short video to explain who we are and what we do. You can view it here on YouTube https://youtu.be/7t1jBqJJTl8?si=LeOiNag8_LeSPzX0

What we would love you to do:

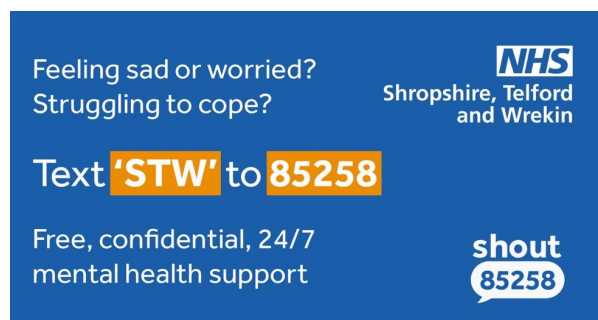
1. Follow us on social media. We use social media as a key tool for reaching parents and professionals, so give us a follow and we will follow you back.

[Family Info Service Facebook](#)

[Family Info Service Instagram](#)

[Family Info Service Twitter](#)

2. Subscribe to our newsletter <https://orlo.uk/5RvZN>



From 1 December, a new, free 24/7 mental health text support service is available for people of all ages living in Shropshire, Telford and Wrekin (STW), delivered by qualified mental health professionals. The service is delivered by SHOUT on behalf of Midlands Partnership University NHS Foundation Trust (MPFT) who are commissioned by NHS Shropshire, Telford and Wrekin. Why is it important? The service expands access to immediate mental health support, complementing existing services such as NHS 111 option 2, and supports the national transformation of NHS mental health care by improving responsiveness, inclusivity and accessibility.

How to access?

Text **'STW'** to **85258**, free of charge and at any time, to start a conversation with a trained mental health professional.

Benefits to Patients

- **Easy access.** No need to speak on the phone or wait for an appointment. Text at any time from anywhere.

- **24/7 support.** Available day and night, including weekends and holidays.
- **Mental health-focused.** Tailored to people experiencing mental health difficulties, delivered with compassion and understanding.
- **Discreet and private.** Ideal for those who prefer not to talk on the phone or need support in a public place.
- **Inclusive and equitable.** Helps reduce inequalities by offering support to anyone across STW.
- **Integrated with local services.** If needed, text responders can help you signpost to local services like NHS 111, crisis teams, or other community-based mental health support.

If someone feels unsafe or at immediate risk, they should call 999, as the text service is not intended for urgent emergencies. Individuals already receiving mental health support should contact their named worker first, in accordance with their care plan.

Further information can be found by following this link:

<https://www.shropshiretelfordandwrekin.nhs.uk/news/mental-health-text-service-launch/>

BeeU Emotional Health and Wellbeing



Are you a parent/carer to a child under the age of five?

Are you concerned about meeting their emotional needs or some challenging behaviours that you are seeing?

Would you like to have a better relationship with your baby or child?

Do you worry about your bond or attachment with your baby or child?

Do you worry that you are not able to meet the needs of your baby or child?

Here at BEEU we can help you explore the answers to some of these questions and many more issues that you may be affected by

Our practitioners can offer a listening ear and help you make sense of some of the thoughts and feelings you have around your relationship with your baby/child.

We may also be able to offer a therapeutic intervention if you wish and is appropriate

We have two practitioners who are trained in Video Interaction Guidance (VIG) therapy which is an evidence-based approach to supporting better relationships with parents and their baby/infants in the early years. You can find out more about VIG at [What is VIG? | AVIGuk](#)

If you would like to find out more about our service and if it is right for you or would like to speak to one of our practitioners please contact BeeU via email:

beeuearlyyears@mpft.nhs.uk

We welcome contact from parents/carers directly.

TogetherNESS for better emotional health (previously known as the Solihull Approach):

TogetherNESS is an online learning environment developed by psychologists and health practitioners providing accessible learning about emotional health and wellbeing, proven to positively impact mental health, behaviour and relationships.

To find out more about the free online courses please visit:

<https://inourplace.co.uk/shropshire/>

For more information on the change from 'Solihull Approach' to 'TogetherNESS' please visit:

<https://inourplace.co.uk/becoming-togetherness/>



How to sign up:

Residents can access these courses for free by entering the Shropshire and Telford & Wrekin

Access Code:

DARWIN18

at inourplace.co.uk.

inourplace 

Bridgnorth Community Information Drop In Sessions

Family Drop-In

Here to help

Free information, advice and support

You can chat, have a drink and see how we can all help you with:

- Family Life
- Children's health and wellbeing
- Drug and alcohol support
- Housing Support
- Domestic abuse support
- Financial advice
- Home fire safety
- Healthy living advice
- Help with getting back to work

Bridgnorth Youth Centre
45 Innage Lane, Bridgnorth WV16 4HS

Every Tuesday from 1.30pm—4pm



Supporting families with children aged 0-19 years (up to 25 years for young people with special educational needs and disabilities)

We aim to make it easier for you to ask for help and get support when you need it.

Shropshire Council www.shropshire.gov.uk

Shropshire Supporting Families through Early Help





COFFEE & CHAT

Stay & Play

Every Tuesday
1pm until 3pm
Bridgnorth Library, 67 Listley Street,
Bridgnorth, WV16 4AW

All families within the local area welcome

Free information, support & advice around:

- Family Life
- Housing & Finance
- Special Education Needs and/or Disabilities (SEND)
- Parenting Support
- Training & Employment
- Domestic Abuse Support
- And much more...

REFRESHMENTS WILL BE PROVIDED
"PLEASE BRING YOUR OWN SEALED CUP/TRAVEL MUG"




shropshire.gov.uk/early-help

Shropshire Council

Highley Community Drop In Sessions

Community Drop-ins

How can we help you?

Come along to:
Highley Library, Halo Severn Centre, Bridgnorth Road,
Highley, WV16 6JG

The fourth Friday
of each month
9.30am-12.30pm



Free information, advice
and support around;

- Housing support
- Getting older
- Family Life
- Domestic Abuse
- Special Educational Needs and/or Disabilities (SEND) support
- Parenting support
- Finance support
- Healthy living, and much more!

Sponsored by:



OneplusOne



Introducing the Separating better app, a **free** self-guided mobile app for separating parents, designed to facilitate a smoother separation journey and promote positive co-parenting. This app is filled with expert advice, video resources, practical parenting, and budgeting plans, as well as co-parenting tips. It offers an easy-to-follow journey where you can track your progress and unlock app sections as you go.

Find out more and download the mobile app, now:

https://www.oneplusone.org.uk/separating-better?utm_source=referral&utm_medium=social&utm_campaign=sbaffiliate

For face to face support, go to [Getting on better | Shropshire Council](#) and select Free Courses and Workshops.




An online course to help parents communicate better with each other

Arguing better

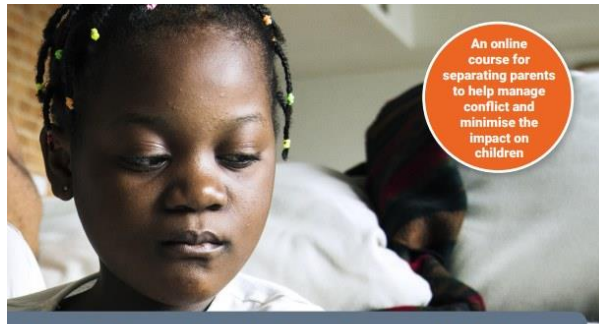
Disagreements are a normal part of life, and most couples argue from time to time. How you deal with disagreements can make a big difference to you, your partner, and your children.

This free online course can help you learn to manage difficult conversations, avoid conflict, and improve things for your whole family.



Create your free account at www.oneplusone.org.uk/parents or scan the QR code
To access the course, you will need a good internet connection and a smartphone, tablet, or computer.

oneplusone 1 / 3



An online course for separating parents to help manage conflict and minimise the impact on children

Getting it right for children

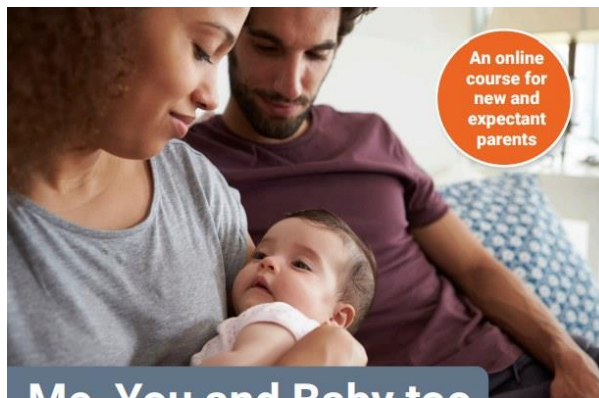
When separated parents argue, it's common for children to feel like they are caught in the middle. This free online course is designed to help separated parents communicate better with each other and parent cooperatively after parting.

You will learn positive communication skills like staying calm, seeing things differently, and speaking for yourself so that you can sort out disagreements with your child's other parent and find solutions together. You can do the course on your own, at your own pace.



Create your free account at www.oneplusone.org.uk/parents or scan the QR code

To access the course, you will need a good internet connection and a smartphone, tablet, or computer.



An online course for new and expectant parents

Me, You and Baby too

Tiredness and stress are common when you're caring for a baby. If parenthood is leading to more arguments between you and your partner, this free online course could help.

With tips and advice on how to talk about difficult topics, share stress, and prevent arguments, this short course will help you and your partner navigate challenging times together.



Create your free account at www.oneplusone.org.uk/parents or scan the QR code

To access the course, you will need a good internet connection and a smartphone, tablet, or computer.

Pharmacy First can help families – a new service available in Shropshire, Telford and Wrekin

Pharmacy First can help families with minor illnesses and seven common conditions. If appropriate, treatment can be offered without a prescription for seven common conditions, and it can be quicker to see a pharmacist than a GP. Normal prescription charges and exemptions (those who do not have to pay, including children) will apply.

A pharmacy is a great place to get healthcare advice and treatment. Pharmacies are easy to reach, usually located within local communities, and often open evenings and weekends. This service may help children and colleagues get well and back to nursery/school/work quicker.

Health Visiting Information

Every family with children under 5 has access to a health visitor.

Families can access advice and support up until the age of 5 years old by calling **The Single Point of Access on 0333 358 3654**.

If parents don't want to talk to someone, they can send a text and one of the team will get back to them on **07520 635212**

This is a Monday to Friday service 09:30am until 4pm where a Health Visitor is on the line to offer the appropriate advice and support and referrals can be made to the appropriate practitioner.

If parents need extra support or support for potty training, behaviour, sleep, eating we have two Healthy Child practitioner who they can be referred to who will come out to their home or to a clinic to support the family with these issues.

This referral can be completed through the single point of access and sent to the appropriate team.

If it is specialised targeted work the family will be seen by a Health visitor for example low mood or complex development issues, safeguarding or specialised referrals.

All children are seen universally at one years and at two years and they are offered a full health growth and development review via a letter with an appointment.

These are now completed at Cleobury Mortimer Health Centre, Ludlow or Bridgnorth depending on where they live.

PARENT CARER COUNCIL
PACC
SHROPSHIRE

Accessing Support

Knowing how to access support and who to speak to can be overwhelming and difficult at times. We have created this information sheet of charities and organisations that can provide help and support. You can also contact PACC for support and information on info@paccshropshire.org.uk

Shropshire IASS
Inclusion Advice & Support Service
We provide information, advice and support to parents and carers of children aged 0 to 25, and young people aged 16 to 25 who have, or may have, special educational needs or disabilities (SEND).

autism west midlands
We are the leading charity in the West Midlands for Autistic adults, children, young people and those who love and care for them. Our passionate, expert staff and volunteers work across a range of age groups and abilities.

contact
for families with disabled children
We're here for families wherever they live in the UK, and whenever they need us.

SHROPSHIRE LOCAL OFFER
The SEND local offer is a single place for information, services, and resources for children and young people aged 0-25 with special educational needs and/or disabilities, their families, and the practitioners who support them.

PREPARATION PACC FOR ADULTHOOD
The PACC Preparation for Adulthood (PFA) Navigator service is available to help SEND families understand the options available for young people with SEND on their preparation for adulthood journey.

IPSEA
IPSEA is a registered charity in England that provides free legal advice and support to families of children with special educational needs and disabilities (SEND).

PACC (Parent Carer Council) have created an information sheet of charities and organisations that can provide help and support.

Please let us know if you would like a copy.

Otherwise please contact PACC for support and information on info@paccshropshire.org.uk

Celebrating Children's Achievements



The children representing all the hard work and positive attitudes in our school this week.

NUMBOTS AND TTRS RAFFLE
STATIONERY PRIZES GLITTER PENCILS TWIN WHITEBOARD RUBBERS GEL PENS AND MUCH MORE

TO ENTER THE RAFFLE:

- 15 MINUTES NUMBOTS STORY MODE GAMES PER WEEK.
- PLUS 1 CHALLENGE GAME (AT THE LEVEL SET BY YOUR TEACHER).

OR

- 15 MINUTES TTRS GAMES PER WEEK.

RAFFLE WILL BE DRAWN ON A FRIDAY.
ONE RAFFLE WINNER PER YEAR GROUP.

PRIZES HAVE BEEN CHOSEN BY SCHOOL COUNCIL AND KINDLY PURCHASED BY FOSPS.

Numbots:

Reception: **Arthur Feeney**

Year 1: **Bella Evans**

Year 2: **Boyd Dorrell**

Year 3: **Raith Philpott**

Year 4: **Rosie Callaghan**

Year 5: **Otilie Mantle**

Year 6: **Maxwell Middleton**



Spelling Bee

Bronze:



Sports Stars:

Teme: **Tommy** for his careful listening to the rules of each game.

Rea: **Kai** for great control in tennis.

Corve: Mrs Stokes chose **Joey** as her sports star this week.

Severn: **Harrison** for persevering with improving his technique when over arm throwing / **Teddy** for great improvement with his hand / eye co-ordination in tennis.



Pride and Presentation: Award for pupil focus on presentation of work across the curriculum.

Teme: **Hollie** for her progress with applying pencil pressure and her pencil grip.

Rea: **Halsey** for her maths presentations.

Corve: **Mason** for his development in handwriting over the past few weeks.

Severn: **Lillie** for her handwriting in English.



Great Sentence using words of the week:

Teme: The logs for my treehouse are **heavy**. **Caleb**

Rea: The seagulls were **surrounding** the food. **Arthur**

Corve: The store was **deserted** at 6am, even though their best sellers were out. **Esther**

Severn: The woman that lives next to me is very **eccentric**. **Ellie**



Class Achievers:

Teme: **Anderson** for his positive attitude towards reading and phonic sessions this week.

Rea: **Bella W** for challenging herself in maths to extend her learning by writing the commutative answers as well / **Oliver** for great tracking of the word cards in phonics / **Boyd** for independent application of multiplication to problem solving in maths - showing great resilience, but then also helping a partner with his explanations.

Corve: **All of Corve Class** for being brilliant ambassadors of Stottesdon School at the Lacon tennis festival.

Severn: **Oliver** for making the right choices when working in small groups / **Alfie** for great knowledge of life cycles.



Children selected for growing kindness.

Reception: **Renley** demonstrated kindness towards our nursery children during afternoon break.

Year 1: **Luke** for comforting a friend.

Year 2: **Tara** for being forgiving and understanding with a friend.

Year 3: **Libby Grace** for being a brilliant team player.

Year 4: **Skyler** for helping a younger pupil on the playground when they fell over.

Year 5: **Izzy** for asking if a friend was ok after a bump.

Year 6: **Noah** for encouraging others to make the right choice.