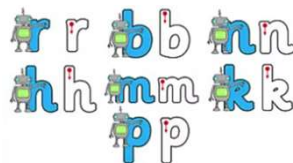
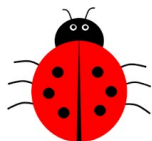
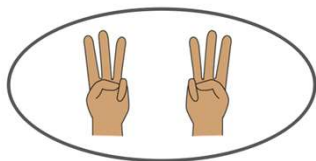




# Reception Spring 2: Wild Animals Around the World

Our overview curriculum map aims to give a snapshot of the rich experiences and cycle of learning our children are submerged into. In addition, teaching and learning will reflect children's interests.



## Sticky Knowledge

- Know dinosaurs lived a long, long time ago and are no longer alive, but their fossils are here now.
- There are some animals that don't live in England and will compare with another country.
- Know that the green on a globe is land and the blue is sea and a globe shows different countries around the world.
- A habitat is a place a plant or animal lives that has shelter, food and water.
- There are different habitats; desert, ocean, artic, rainforest, grasslands.
- Know that this time of year is spring and the signs and changes of spring (buds in trees, lambs in the field, birds in the garden).

### Poems:

A Little Seed  
Spring Wind  
Pitter Patter

### Nursery Rhymes:

1,2,3,4,5 Once I Caught a Fish Alive  
Wind the Bobbin Up  
Hey Diddle Diddle  
Hickory Dickory Dock

### Word Aware Concepts:

Shiny, Above, Both, Second,  
Next, Light, Dark

	ai		ee		ur		ow
	igh		oa		oi		ear
	oo		oo		air		er
	ar		or				



Phase 3 sounds taught in Reception Spring 1

<https://www.littlewandlelettersandsounds.org.uk/resources/for-parents/>

As **mathematicians**, in this half-term, we will explore symmetrical patterns and doubling. The cardinality of numbers within 10 and the counting pattern beyond 20. We will identify odd and even numbers using the 'shape' of these. We will begin to link even to doubles. We will compare numbers and reason using its 'how many'ness/position in the number system. In our Shape, Space, and Measure sessions (Fridays), we will explore and name 2D and 3D shapes.

As **readers**, we will review all Phase 2 and 3 diagraphs (two letters making one sound) and trigraphs (three letters making one sound). We will continue to practise our oral blending skills, blending the sounds to say the word (r-ai-n). We will practise our segmenting skills to support our spelling phonetically plausible writing. We will read longer words, and longer words ending in s and -ing.

As **writers**, we will be beginning to write simple sentences with the introduction of capital letters at the start and a full stop at the end. We will practise writing our full names. During our handwriting sessions, we will practise the formation of the 'Robot Arm' letters r, b, n, h, m, k, p.

In **RE**, we will be investigating the question **Why is Easter Special to Christians?** We will retell stories connected with the celebration of Easter. What do Christians believe happened to Jesus? We will talk about ideas of new life in nature. We will recognise some symbols Christians use during Holy Week, e.g. palm leaves, cross, eggs, etc., and make connections with signs of new life in nature.

As part of our understanding of the world, we will be finding out about wild animals around the world and their habitats. We will also be visiting Dudley Zoo. To develop our **expressive art**, we will explore art through the question **'WHAT CAN WE SEE?'** - **Still Life Compositions - inspired by Cezanne**. In **music**, we will use Music Express Activities "Going Places" to develop an understanding of and identify high and low sounds. In **DT**, we will design and create models using construction linked to the themes & discussions.

In **PE**, we will focus on gymnastics experimenting with stretching, curling, incorporating rolls and Creating a short sequence with a partner. We will aim for four Forest Fun sessions to explore using and handling tools safely.

In **ICT**, we will use the laptops to access mini mash and complete spring tree pictures. We will use programming toys - Beebots and Codepillars.

In **PSHE**, we will follow the Jigsaw theme 'Being Healthy'.

## Talk For Writing Texts

