



...we really care and make learning fun.

Stottesdon C. of E. Primary School



Shropshire Gateway Educational Trust

Tel: 01746 718617

Email: admin@stottesdon-school.co.uk

10th December 2021

Website: <http://stottesdon-school.co.uk/home>

Diary Dates

Monday 13th December	NO AFTER SCHOOL CLUBS THIS WEEK. COSTUMES TO COME INTO SCHOOL
Tuesday 14th December	OUR DRESS REHEARSAL IN CHURCH (Costumes should be in)
Wednesday 15th December	School Christmas Lunch— Non-uniform day / cake sale
Thursday 16th December	Nursery Nativity — 9.15am School Hall: 1 person per family—masks please
	Christmas Production — 1.30pm St. Marys Church, Stottesdon Rea & Severn Class: 1 person per family—masks please
Friday 17th December	Christmas Production — 1.30pm St. Marys Church, Stottesdon Teme & Corve Class: 1 person per family—masks please

**THANK YOU TO ALL REA AND TEME PARENTS FOR READING REGULARLY—
A FANTASTIC 100%
THIS MAKES THE BIGGEST DIFFERENCE**



School Council—Desk Top Calendar Fundraiser



Well done everyone, you are amazing, the judges had a very hard task selecting the winning picture for each month from the brilliant selection that was produced. The calendar is now at the printers and will be delivered next week. The cost of each calendar will be £5, they are now available to be purchased on the online payment system.

Money raised will be split between the school and Cancer Research.

The children who have had their designs selected to be included in the calendar are listed in the achievers section of the newsletter.

We would like to gift some of the calendars to members of the local community who are elderly / vulnerable — if you know of anyone who would appreciate this small gift please let the office know.

Henry Griffin and Lottie Clayden (School Council Representatives)

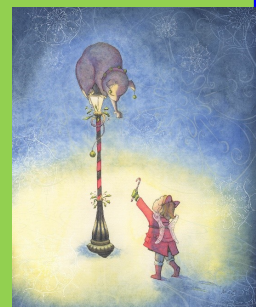
Daily Reflection or Prayer

This week we have:

- Decorated our school Christmas tree and learnt about the tradition of decorating Christmas trees. Staff and each year group wrote a message to all on a Christmas bauble that they hung on the tree. There were some really lovely messages.
- Open the book celebrated the First Christmas with the nativity story. Today children will be coming home with a gift from Open the Book. KS 1 have got a copy of a lovely little book called 'The Christmas Poem' and KS 2 have got 'The Impossible Promise'.

All children have also enjoyed a chocolate coin and figure. Thank you very much to open the book for bringing assemblies to life and their generosity. We wish them a very Merry Christmas.

- Phase assemblies focussed on 'sharing the light' and thinking about those who may be lonely and offering kindness during the festive period.



Late Arrival for the school day.

The Education Welfare officer is currently monitoring the late arrival of a number of pupils for the school day.

We urge parents to do their utmost to ensure children arrive between 8.45am and 8.55am, as late arrivals disrupt the class, disrupt the children's education and causes the children upset.



FoSPS

Reminder—as detailed in last weeks school news.....

Wednesday 15th December;

- **Non-Uniform/Christmas Outfit Day.** all pupils are asked to donate £1.00, and wear their own clothes, or Christmas outfits for the day.
- **Cake Sale,** this is always a very popular event; cakes will be available for all pupils to purchase at break time, cakes will be priced from 25p to £1.00.

We would kindly ask if all parents could donate a box/packet of cakes shop bought cakes.



Guess How Many Sweets Competition; the chance to win a jar full of yummy treats! There will be one jar per class (Nursery/Teme, Rea, Corve and Severn). £2 to enter (includes 2 guesses). See attached flyer for more details.



Finally, if you have not already joined our School Lottery, please follow the link below to do so.

It's really easy to join, you can set up a direct debit for payment, its only £1 per ticket and every Saturday there is a draw where you could win the national prize fund of £25,000

Our school lottery currently raises just over £1,800 a year, which goes directly to the school.

We have 43 supporters, who have all purchased a weekly ticket, if every parent signed up, we could double this amount each year, which would be an amazing contribution to help support our school.

www.yourschoollottery.co.uk

Next FoSPS meeting to take place on Thursday 13th January at 8.00pm (via Zoom)

EYFS News

Nursery Talk for Writing: Dear Santa

Reception Talk for Writing: Jesus' Christmas Party

Our Rhyme of the Week: O Christmas Tree

<https://www.youtube.com/watch?v=aBU7khh1-2o>

Nursery Concept Cat word: Top

Reception Concept Cat word: Same

Nursery Nativity Thursday 16th December 2021 followed by a Christmas Party for the Nursery children. Children to come dressed in their nativity costume.





Sorry you're leaving

Sadly Mrs Walker, who has been with us for many years, working tirelessly to keep the school clean and tidy for everyone, has decided to hand the cleaning challenge on.

We will all miss her greatly, she will certainly be a hard act to follow.

We would like to present Mrs Walker with a leaving present, if you would like to contribute would you please hand your donation into the office by the end of next week.

Could parents please help with the circulation of the attached advert to anyone you feel may be interested in this role. Deadline is Friday 10th at 5pm.

Job Vacancies across the Shropshire Gateway Educational Trust

Senior Cleaning Assistant & Site Key Holder at Stottesdon CofE Primary School
(Advert & job description attached – please share within the local community)

At present, due to development of specialist areas within the MAT central team, Lacon Childe School have the following vacancies (please see the attached sheet for further details):

- Assistant to the Trust Business Manager
- Office and Administration Manager for Lacon Childe School
 - Trust Clerk to the Directors and Governing Boards of all 4 schools
 - Cover Supervisor for Lacon Childe School
 - Casual Catering Assistant based at Lacon Childe School
 - Minibus Drivers (permanent & relief) for Lacon Childe School
 - Teaching Assistants – Level 2 for Lacon Childe School



Rea Class

Phonics and spellings

Phonics for year one next week will continue to focus on practising alternative spellings for ai, oa and ee.

Phonics and spelling for year 2 will continue to be homophones and more dge, ge j and g sounds.

Spellings will be words from our phonics sessions and sent home in a list in your child's folder. Please help them to practise a little each day.

Severn Class

Children in Severn Class taking part in the water safety session delivered by West Mercia Police.



Rea Class

Next week Rea Class are making and testing their moon buggies. If you have any small boxes that we can use it would be very much appreciated. Thank you.

Rea class trip:

Rea class had a fantastic time at Think Tank Birmingham Science Museum on Monday. We attended a Destination Space show in the theatre, where we applied our learning skills about materials to find out the best way to dress an astronaut for a space walk; how to use air to launch a rocket; how solar panels need to face the sun; and how to sleep in the International Space Station.

We then visited the planetarium for a close up visit to the stars and the planets in our solar system.

After that, we explored some of the galleries in the museum, find out about different types of animals and exploring models of how our digestive systems and our hearts work.

We then had the opportunity to find out about the human features of Birmingham by exploring the Mini Brum role play area.



Staffing Changes: January 2022

As previously announced, I am stepping into the Executive Headteacher role from January 2022. I will still be the headteacher for Stottesdon CofE Primary School and Nursery but will be giving some time to overseeing The Shropshire Gateway Educational Trust. This doesn't mean I'm becoming the headteacher of the other schools but I am taking an executive role which is accountable for the strategic direction and performance of the trust as a whole. In order to take on this role we have needed to make some staffing changes at Stottesdon to 'back fill' some of my role. As a result, Governors and I are pleased to announce that:

- **Caroline McKay has been appointed as Assistant Headteacher from January. We congratulate her on her appointment, and know the strength she brings to this role.**
- **Esther Leverett – Williams, who already teaches music across the school, has been appointed as teacher/lead of Religious Education and Music for 4 afternoons a week. This also brings additional strength and specialism. All children will benefit from her leading these specialist areas (Monday—Severn; Tuesday—Rea; Wednesday—Teme; Thursday—Corve).**

These are exciting changes and I have every confidence that they will further strengthen our provision for children.

Inconsiderate Parking

Unfortunately, the Parish Clerk has sent the following message regarding parents parking:

I have had a complaint from a resident regarding parents parking on the grass in Glebe Drive - opposite the 6 parking bays. If you have a look, they are churning this up. There is no need for them to park there - they actually park half on the grass and half on the drive making it difficult for people reversing out of the parking bays and residents/delivery vehicles to get through.

On at least 3 occasions I have witnessed some people parking in front of the school and on the grass when there are plenty of spaces available in Glebe Drive.

Our tenancy agreements say, 'Do not park on pavements, footpaths or grassed areas, you can be recharged for damage caused to these areas'.

Would parents please be considerate during busy times.

School Closure Arrangements

As we head deeper into the winter period we would like to remind parents of the procedure if we need to close the school (due to severe weather). This will always be as a last resort to ensure the safety of staff and students.

- Decisions will be made and communicated by 7am at the latest.
- Decisions to close will be sent by email and will be announced on Shropshire Radio (**Frequency:** 96 MHz, 90 MHz, 95 MHz, 104.1 MHz)



**FESTIVE
HOLIDAY
CLUB**

Christmas Holiday Club

Attached to this weeks school news is the Christmas Holiday Club program.

If you would like your child to attend any of the sessions, please complete and return the booking form to the office. Pre-booking essential



Christmas Concerts

We are currently still arranging Christmas concert attendance as follows. This year's celebration involves the whole school on both the Thursday and Friday but we are splitting audience numbers to make the event as safe as possible. **PLEASE NOTE THAT ONLY 1 FAMILY MEMBER SHOULD ATTEND EITHER THE THURSDAY OR FRIDAY. IF YOU HAVE CHILDREN IN MORE THAN ONE CLASS PLEASE ATTEND THE DAY OF YOUR OLDEST CHILD**

- Thursday 16th December 2021 Nursery Nativity @ 9:15am - In the school hall. Audience of 15 people
- Thursday 16th December 2021 School Concert @ 1.30pm — St. Mary's Church, Stottesdon Parents of Rea & Severn Class Children
- Friday 17th December 2021—School Concert @ 1.30pm — St. Mary's Church, Stottesdon Parents of Teme & Corve Class Children

We do not want to create an event which runs the risk of increasing Covid infections just before the Christmas period, which could then ruin people's Christmas.

As a result, we additionally request the following:

- Only one adult per family attends (this would create audiences of around 35 people at each concert). Adults would be able to do some distancing, as we are planning to use the whole church and free up as many pews as possible. Parents attending to wear masks.
- Parents will be allowed to take videos and photographs but please be reminded that these are for personal use only and under no circumstances are they to be shared on any social media platform.



Class Reading Information:

Time: 100% Rea: 100% Corve: 83% Severn: 96%

PLEASE HELP OUR YOUNGEST CHILDREN AND READ WITH THEM 4 TIMES A WEEK TO HELP DEVELOPMENT WITH THIS CRUCIAL LIFE SKILL.

Achievers

Well done this week to:

All Reception and Nursery Children for a successful first trip.

Isabelle for focus in her writing.

Sofia, Ruby and Billy for their determination and focus in her reading assessments in the morning.

Maxwell for bravery because overcoming a fear and doing something when you are scared shows real courage.

Handwriting star of the week - Izzy

Hollie D and JJ for carefully editing their spelling in their writing.

Willow, Aaron, Bella L. and Harriet for writing a fantastic version of the story Elf Road.

Felicity and Henley for using their success criteria effectively in English to write a recount of Blists Hill.

The winners of the school calendar have been decided by the school council; the winners for each month are:

Front Cover- Noah Weston

January - Lincoln

February - Jay

March - Lottie Griffin

April - Izzy

May — Heidi

June — Lilly May

July - Eliza

August — Elliot

September — Henry

October — Noah PD

November - Noah Wilson

December — Tara

Bronze Spelling Bee: Ana, Archie C and Nils

Book Token: Isla, Lincoln, Maia, Gabriel, Lorelei, Lucas, Hollie D., Samuel, William G., Payton, Nate and Ronnie

Sports stars of the week:

Rea Class: Scarlett for brilliant expression in her dance routine.

Corve Class: Noah PD for his PE lesson with Steve Adams.

Severn Class: Archie M for his PE lesson with Steve Adams.



I have the same skirt as Esther. Francesca

We went to the planetarium to see the black sky and then we looked up at the stars. Cash

A superhero became a martyr because he died to save the world. Lottie-Boo

I have an obsession with Strictly because I love dancing! Lottie C

Using words of the week