



...we really care and make learning fun.

# Stottesdon C. of E. Primary School



Shropshire Gateway Educational Trust

Tel: 01746 718617

Email: [admin@stottesdon-school.co.uk](mailto:admin@stottesdon-school.co.uk)

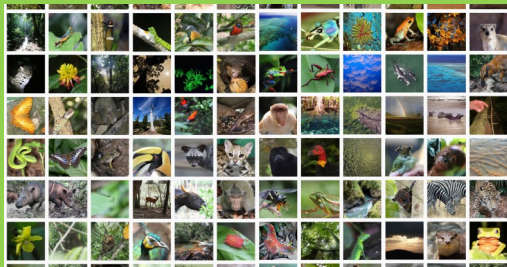
23rd April 2021.

Website: <http://stottesdon-school.co.uk/home>

## Diary Dates

Monday 26th April	PE Teme Class – Children in this class to come in their PE kits. Top Adventure Activity Club – Years 3 and 4
Tuesday 27th April	PE Corve & Severn Classes – Children in these classes to come in their PE kits. Individual music lessons with Mrs Esther Leverett Williams Guitar / Ukulele Lessons with Mr Ashford Rounders After School Club – Years 3 and 4
Wednesday 28th April	PE Rea Class – Children in this class to come in their PE kits. Mrs McKay's After School Club Gardening After School Club – Years 1 and 2
Thursday 29th April	PE Severn Class – Children in this class to come in their PE kits. Individual music lessons with Mrs Esther Leverett Williams. Football After School Club – Years 1 and 2 – football boots not required as children will be on the playground / school will provide shin pads if necessary. <b>Children attending this club will need to come into school in their PE kits <u>not</u> in football strip please.</b> Top Adventure Activity Club – Years 5 and 6.
Friday 30th April	Rea Class Football Tournament at Lacon – Children in this class to come in their PE kits.
	PE Teme & Corve Classes – Children in these classes to come in their PE kits.

## Daily Reflection



As a regular feature we would like to share the themes of our assemblies in order for parents to see how we are building up our values and considering what is

important. In our assemblies this half term we are focussing on **creation and responsibility**. So far we have thought about our wonderful world and the variety in creation (plants, animal, humans, landscapes) and how the world is a gift for us to look after. We have considered the importance of recycling and what we do in school to help look after the world's resources.



Genesis 2:15

The LORD God took the man and put him in the garden of Eden to work it and keep it

We have also reflected on the Muslim faith and their month of Ramadan; Jesus' resurrection and the meeting with doubting Thomas and St George's Day.



## Supporting Key Skills: Using a knife and fork

As we move back to the full menu we have noticed some children struggling with this skill. We will do as much as we can to support, but some fun practice with a playdough or a banana might really help. Keep practising everyone.

**Stottesdon Gateway NURSERY**  
We really care and make learning fun

**We can offer:**

- A safe and nurturing learning environment with dedicated and caring staff.
- High quality provision with strong links to Reception.
- An amazing outdoor area and use of the school facilities and space.

Nursery places for 2, 3, 4 year olds, available from September 2021

- From 15 - 30 funded hours available.
- BEFORE & AFTER SCHOOL & HOLIDAY PROVISION for children aged 2 - 11 years old.

Shropshire Gateway Educational Trust  
**GET IN TOUCH:** 01746 718617 - Stottesdon C of E Primary School, DY14 8UE  
[www.stottesdon-school.co.uk](http://www.stottesdon-school.co.uk)

# I'm a Little Bean Song

(Sing to the tune of 'I'm a Little Teapot'.)

I'm a little bean small and round,  
(curl up on the floor)  
Bury me deep in the ground,  
(sung in a very low deep voice)  
Sprinkle on some water,  
(act out watering can)  
Some sunshine too,  
(hands out wide)  
Watch me grow as tall as you.  
(stretch to the sky)

## Nursery and Reception News

### Nursery News

#### Nursery Rhyme of the Week:

I'm a Little Bean Song

#### Letter sound of the Week: g

Parents might find this YouTube clip helpful: Letters and their sounds  
<https://www.youtube.com/watch?v=J8KR8ThoPI4>

#### Number of the week: 5

#### Talk for Writing: Jasper's Beanstalk

Every Wednesday morning for six weeks we have Shropshire Music Service visiting Nursery to lead a music session and support us with developing our listening skills, singing and exploring music instruments. Mrs. Williams has also been able to return to Nursery on Thursday afternoons to lead a music session.

In PE on Mondays we are practising our climbing, balancing and jumping skills. This week we set up an obstacle course with a climbing frame and slide.



### Reception News

Last week, Reception planted a bean just like Jasper from our focus text 'Jasper's Beanstalk'. We have started a bean diary to record drawings and writing in of any changes we notice or observe.

In our continuous provision learning, Reception children worked in pairs to build a beanstalk out of the contents of our junk box. The children used masking tape (lots), scissors and staplers independently to attach and secure 'junk' into a shape of a beanstalk. The children decided among themselves to join their models together to create a very tall beanstalk.



Well done Cash for continuing to water his Easter garden - it looks lovely.



## Top Adventures

The activity days for Rea Class on Thursday May 13th and for Corve Class on Friday May 14th are now on the online payment system. A contribution of £10.15 is requested. Completion also indicates permission for your child to attend.

The residential stay for Severn class on Thursday 17th / Friday 18th June is now on the online payment system. A contribution of £81.20 is requested.

Please note that if you are eligible for benefit related FSM, we are asking for a contribution of half of the above, this is on the system for those families concerned.

A big thank you to FoSPS: through the money they have raised, we have been able to reduce the price of these activities by £10 per pupil.



## Road Closures

Please see the attached information regarding road closures week commencing 26th April and week commencing 10th May.



Would those parents travelling from Bridgnorth please note that the road from Brooksmeeing Bridge to the Blundell junction, will be closed around collection time in the afternoon – the attached map does show a diversion route, alternatively you could turn right at the bottom of Deuxshill bank towards Sidbury (a shorter route but the road is quite narrow). According to the letter, work will not start until 9.30am so you should be alright to use the normal route in the morning.



The second letter refers to work on Station Road, unfortunately, this road will be closed 7am to 5pm so parents will need to follow the long diversion route given.

We have asked for clarification on these closures as the road signs differ from these letters—this is the response we had:



According to the most recent daily update the surface dressing works are planned as follows:-

Site 411	STOTTESDON RD JCT TO BROOKSMEEING BRIDGE	28-29 April
Site 420	STATION ROAD START TO 30MPH, STOTTESDON	29 April

There will also be sweeping works and lining works from 12 May which will be carried out under Stop & Go boards for up to 3 days.

## FoSPS

Dates for your diary:

**Wednesday 5th May at 8.15pm**—We will be holding a zoom meeting to discuss fund raising activities for the school.

Everyone welcome, please just e-mail our Chair, Mary Lewis; [mary1978lewis@gmail.com](mailto:mary1978lewis@gmail.com)

**Tuesday 11th May** - We will be raising funds again through Bags to School, please drop off any bags of clothes or shoes under the shelter by nursery on Tuesday morning.



## Covid Measures Updates

**IF ANYONE IN A HOUSEHOLD OR SUPPORT BUBBLE DEVELOPS SYMPTOMS, CHILDREN OR STAFF SHOULD NOT COME TO SCHOOL UNTIL A PCR TEST RESULT CONFIRMS ACTIONS. HOUSEHOLDS, SUPPORT BUBBLES AND CLOSE CONTACTS SHOULD ISOLATE IF THERE IS A POSITIVE TEST. CLOSE CONTACTS ARE:**

- Within 1 metre for 1 minute or longer
- Within 2 metres for more than 15 minutes (as one off or over a day)
- People who travel in the same vehicle

Lateral Flow Devices are now widely available for regular home testing. These can support early identification of the virus in order to try and keep it out of the school community. Staff are doing these twice weekly and, if you feel able to also do them, may help us prevent a wider outbreak. PLEASE CONTINUE SOCIAL DISTANCING ON PICK UP AND DROP OFF.

How long do you need to self-isolate for?

- 10 days if you have symptoms or a positive test
- 10 days if someone in your household has symptoms
- 10 days if you arrive back in the UK from abroad\* (Excluding exempt countries)

Book your test now by calling 119 or visit [www.nhs.uk/coronavirus](http://www.nhs.uk/coronavirus)

## Information for parents of girls aged 11 - 13

In the last year, "[self-generated](#)" [child sexual abuse imagery](#) has increased by 77% and is a third of all child sexual abuse material identified and removed from the internet. These included images of girls aged 11 to 13 whose abuse had been recorded via a webcam in a domestic setting.

To help prevent the creation of this type of abusive imagery, a campaign has been launched by the [Internet Watch Foundation](#) (IWF) backed by the Home Office and Microsoft. It aims to help raise awareness of this type of criminality among parents and carers of young teens, empower and educate girls aged 11 to 13+ to spot the techniques used by sexual predators and give them the knowledge to Block, Report, Tell someone they trust.

## SGN Holiday Club

### Dates for the diary:

- Holiday Club will be open Tuesday 1st June to Friday 4th June 2021. (Half Term) information and booking form to follow shortly.
- Holiday Club will be closed 2nd August to 13th August 2021. (Summer Holidays)

## Free School Transport for Year 6

Yesterday we forwarded information from Shropshire Council transport regarding free school transport applications for those year 6 pupils who are due to start secondary school in September.

Shropshire Council have set a deadline of 31st May for applications to be received. Any applications made after this date may not be completed in time for the start of the autumn term.

## Messages for Rea Class:

Phonics for year 1 next week will focus on continued practise of our phase 5 vowel phonemes and alternative ways of spelling the 'sh' and 'or' sounds.

Phonics for year 2 next week will focus on recapping the or sound spelt as 'a' before 'l' and 'll' as in call, talk etc and the 'or' sound spelt as 'ar' afer a 'w', as in 'warm'.

Well done to everyone in Rea class who completed all of their homework.

This week's year 1 spellings to be learned are alternative spellings of the 'oo' sound.

This week's year 2 spellings will be words that end in y, with different suffixes applied.

Year 1 and year 2 will have handwriting practice sheets, that will also focus on their spellings.

An activity has been set on Purple Mash to support if children would like further practice.

Year 2 will have a writing activity in their homework books. Year 1 children can choose to take this if they wish, but there is no obligation for children in year 1 to complete it.

Year 1 and 2 will also be set mathletics activities - please complete two activities. If you are unable to do this, we can provide maths works sheets to be done in homework books.

Can we please ask that children use a pencil to complete their homework in key stage one.

## Flowers

Mrs Lisa Humby (parent of a past pupil), is a local florist, she lives at Glebe Farm Barn, High Street, Stottesdon. If you would like to support a local business, she provides some stunning flower arrangements, please see below for a few samples of her work:



## Class Reading Information:

Teme = 100% Rea = 67% Corve = 73% Severn = 92%

WELL DONE ALL THOSE CHILDREN READING 4 TIMES A WEEK AT HOME. IT IS CRUCIAL THAT ALL CHILDREN BENEFIT FROM THIS HOME SUPPORT AND AREN'T DISADVANTAGED.

### Achievers

Well done this week to:

Harry for remembering a capital letter to start a sentence, fingers spaces and a full stop in his independent writing

Billy M - for great observational skills when talking about our germinating bean seeds, and independent labelling.

Florence, Jenson Shakespeare, JJ, Ruby and Lorelei: a great start to the coding unit (programming computers) to create a fish, screensaver.

Harrison for his data handling work in maths.

Jenson Strong for his wonderful homework.

Scarlett for her independent labelling of her animal in her story.

Lana for real grit and determination to do well in her tricky spellings.

Evan, Rhys and Felicity for their careful maths when interpreting information from bar charts.

Holly for her effort in her interventions with Mr Scott.

Rufus, Zac and Jenson H for using their newspaper tool kit to support their writing.

Billy and Paige for problem solving in science when working with electrical circuits.

Book Voucher: Harriet W, Aaron, Jacob, Lottie D, Archie M

### Sports stars of the week:

**Teme Class:** Spencer for good control and co-ordination when rolling and steering his ball into space and through a number of 'gates'.

**Rea Class:** Bella C for fantastic ball control in football.

**Corve Class:** Nils Muggleton for his PE session with Mr Adams.

Eliza for her perseverance to do rallies with her partner in tennis.

**Severn Class:** Jacob Smith for his PE session with Mr Adams.



I planted an apple tree in my nanny's back garden. Lucas K

He frantically protects the village from poverty and ghastly enemies. Jenson Shakespeare

England is not a republic. It is ruled by a queen, who has a priceless crown on her head! Ana Petra

I founced up the stairs when my mum said I could not have a delicious chocolate egg for breakfast.  
Ruby W

Using words of the week